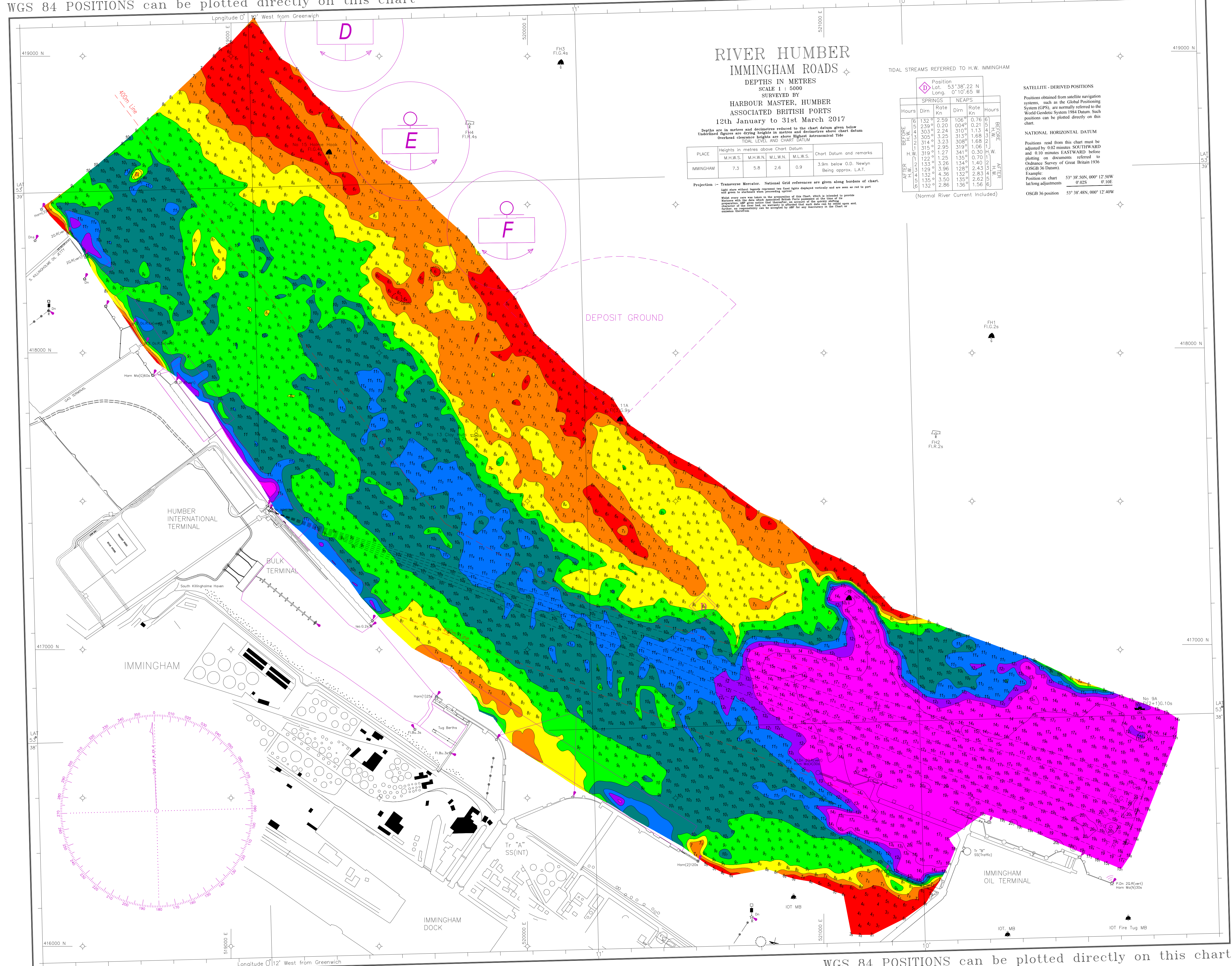


WGS 84 POSITIONS can be plotted directly on this chart

© Copyright 2017. All rights reserved. No part of this product may be reproduced in any form (including photocopying or by electronic means) without prior permission.



RIVER HUMBER IMMINGHAM ROADS

DEPTHS IN METRES
SCALE 1 : 5000
SURVEYED BY
HARBOUR MASTER, HUMBER
ASSOCIATED BRITISH PORTS
12th January to 31st March 2017

Depths are in metres and declivities reduced to the chart datum given below
Underlined figures are drying heights in metres and declivities above chart datum
Overhead clearance heights are above Highest Astronomical Tide
TIDAL LEVEL AND CHART DATUM

| PLACE | Heights in metres above Chart Datum | | | | Chart Datum and remarks |
|-----------|-------------------------------------|----------|----------|----------|--|
| | M.H.W.S. | M.H.W.N. | M.L.W.N. | M.L.W.S. | |
| IMMINGHAM | 7.3 | 5.8 | 2.6 | 0.9 | 3.9m below O.D. Newlyn Being approx. L.A.T. |

TIDAL STREAMS REFERRED TO H.W. IMMINGHAM

| Position Lot. 53° 38' 22" N Long. 0° 10' 65" W | SPRINGS | | NEAPS | | Hours |
|--|---------|---------|-------|---------|-------|
| | Dirn | Rate Kn | Dirn | Rate Kn | |
| BEFORE H.W. | 132° | 2.59 | 106° | 0.76 | 6 |
| | 239° | 0.20 | 004° | 0.21 | 5 |
| | 323° | 2.24 | 310° | 1.13 | 4 |
| | 305° | 3.25 | 313° | 1.68 | 3 |
| | 314° | 3.23 | 308° | 1.68 | 2 |
| | 316° | 2.95 | 319° | 1.06 | 1 |
| AFTER H.W. | 319° | 1.27 | 341° | 0.30 | H.W. |
| | 122° | 1.25 | 135° | 0.70 | 1 |
| | 133° | 3.26 | 134° | 1.40 | 2 |
| | 129° | 3.96 | 128° | 2.43 | 3 |
| | 132° | 4.36 | 132° | 2.83 | 4 |
| | 135° | 3.50 | 135° | 2.62 | 5 |
| 132° | 2.86 | 136° | 1.56 | 6 | |

(Normal River Current Included)

SATELLITE - DERIVED POSITIONS
Positions obtained from satellite navigation systems, such as the Global Positioning System (GPS), are normally referred to the World Geodetic System 1984 Datum. Such positions can be plotted directly on this chart.

NATIONAL HORIZONTAL DATUM
Positions read from this chart must be adjusted by 0.02 minutes SOUTHWARD and 0.10 minutes EASTWARD before plotting on documents referred to Ordnance Survey of Great Britain 1956 (OSGB 36 Datum).
Example:
Position on chart 53° 38' 50N, 000° 12' 50W
lat/long adjustments 0.02S 0.10E
OSGB 36 position 53° 38' 48N, 000° 12' 40W

Projection - Transverse Mercator. National Grid references are given along borders of chart.
Light stars without legends represent true fixed lights displayed vertically and are seen on red to port and green in darkness when proceeding astern.
White over-cast sun signs in the projection of this chart, when illuminated to provide bearings, will be true unless specifically so marked on the chart.
Precedence of true over magnetic bearings is assumed unless otherwise stated.
Indicator of the true and magnetic bearings is assumed that such data can be used with any factor of magnetic variation can be accepted by all for any discrepancy in the chart or omission therefrom.

WGS 84 POSITIONS can be plotted directly on this chart